

Meiji Yasuda Shinjuku Medical Center Access Map

Route by underpass



1 Exit the "Shintoshin Gate" of Toei Shinjuku Line / Keio New line Shinjuku Sta.



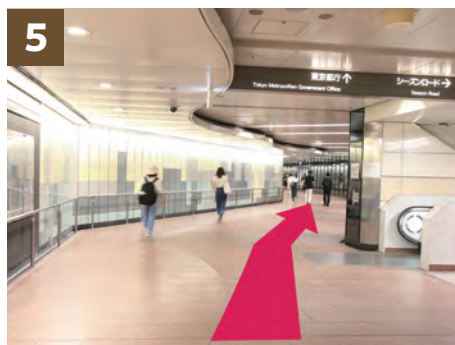
2 Enter "One day Street (underpass)".



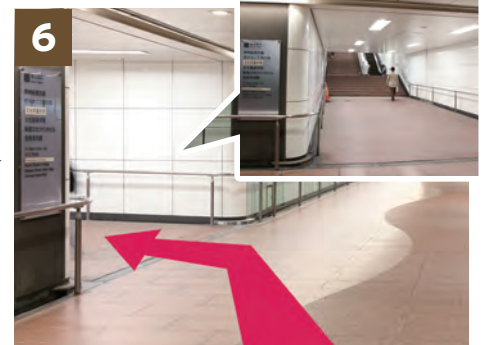
3 Go down the stairs, walk along the underpass.



4 Walk along the underpass to head to "One day Street, O-1 Exit".



5 Walk along the underpass.



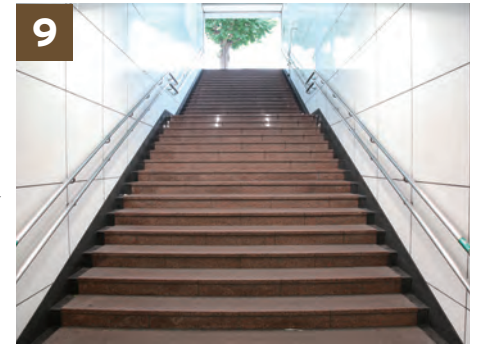
6 There is a guide plate with the name of the building on the left wall, so turn left this corner, head to "Exit to Street".



7 At the end of the climb, turn into left.



8 Climb up stair, then turn into left side.



9 At the end of the climb up the stair, reach to the "O-1 Street Exit".



10 Once on the ground, proceed to the left.
*On rainy days, you can come without getting wet by using the road with a roof on the left.



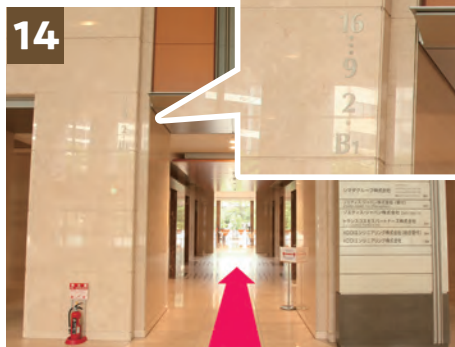
11 Arrived at "Shinjuku Bunka Quint Building", a "Globe object" is in front of the building.



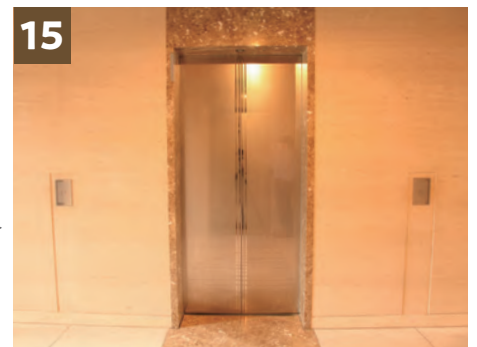
12 Enter the building through the 2 automatic doors on the left and right.



13 They have 3 elevator sections, please go middle one which show on the sign "16...9. 2. B1".



14 Only these 6 elevators go to the 12th floor.



15 Please take by the elevator to the 12th floor.



Access by Train

- 4 minutes from Keio New Line, Toei Subway: Shinjuku Line, Shinjuku Station "Shintoshin Exit"
Exit the "Shintoshin Gate" and proceed through the underpass (One day Street) toward TMG. Go up to the ground from the first exit (Exit O-1) on your left, you will arrive Shinjuku Bunka Quint Building.
- 7 minutes from Toei Subway: Oedo Line, Shinjuku Station
Exit the ticket gate, turn right and proceed through the underpass toward Exit 8. It'll lead to "One Day Street", Then go up to the ground from the first exit (Exit O-1) on your left, you will arrive Shinjuku Bunka Quint Building.
- 7 minutes from Toei Subway: Oedo Line, Tochomae Station "A2 Exit"
- 8 minutes walk West on Koshu-kaido Ave., from JR, Odakyu and Keio Line, Shinjuku Station "South Exit"